

BROWARDSM COLLEGE

DUAL ENROLLMENT

**Presented By: Alexis Kitchman
District Director of Dual Enrollment**

WHY CHOOSE BC?

- Founded in 1960, BC is the oldest and largest institution of higher education in Broward County.
- BC is an accredited public institution of higher education (SACS COC).
- The Aspen Institute named BC one of the top ten community colleges in the nation.
- Small class sizes, affordable, accessible





TYPES OF DEGREES

- Certificates
- Associate in Science (A.S.)
- Associate in Applied Science (A.A.S.)
- Associate in Arts (A.A.)
- Bachelor of Science (B.S.)
- Bachelor of Applied Science (B.A.S.)



8 Career Pathways

- **Arts, Humanities, Communication and Design**



- **Business**



- **Social, Behavioral & Human Services**



- **Health Sciences**



- **Industry, Manufacturing, Construction & Transportation**



- **Public Safety**



- **Science, Technology, Engineering & Math**



- **Education**



- <https://www.broward.edu/academics/>

HOW MUCH DOES BC COST?

\$117.90 per credit (in-state fee rate)

\$373.00 per credit (out-of-state fee rate)

**Each class is about 3
credits each**

**Full time students take
30 credits per year**



**It will cost
approximately
\$3,480.00 for in-
state tuition per
year.**

HONORS COLLEGE

- Incoming high school students
 - Unweighted HS GPA of 3.5 **OR**
 - SAT – English 25, Reading 24, Math 24-26
 - ACT – English 17, Reading 19, Math 19-20
 - PERT – Writing 103, Reading 106, Math 114
- Currently enrolled BC students
 - College level test scores
 - Earned at least 6 college-level credits
 - 3.5 Overall/Honors GPA



www.broward.edu/honors

**BROWARDSM
COLLEGE**

WHAT IS DUAL ENROLLMENT?

Dual enrollment is an accelerated program that allows secondary students to take post secondary coursework and simultaneously earn both high school and college credits, saving both time and money.



**BROWARDSM
COLLEGE**

ELIGIBILITY REQUIREMENTS

Initial Eligibility

- Minimum unweighted HS GPA of 3.0
- College level test scores in English, Reading and Math
 - Achieved through the ACT, SAT, PERT, or ACCUPLACER NG
- Permission from parent and school counselor

Continued Eligibility

- Earn a grade of "C" or higher in each course
- Maintain unweighted HS GPA of 3.0
- Complete DE Recommendation Form each term

PLACEMENT TESTING

Placement test	English	Reading	Math
SAT	25+ (Writing and Language)	24+ (Reading)	24 - 26.4 (MAC1105C, MGF1106, MGF1107) 26.5+ (MAC1105)
ACT	17+ (English)	19+ (Reading)	19-20 (MAC1105C, MGF1106, MGF1107) 21+ (MAC1105)
PERT	103+ (Writing) and 106+ (Reading)	106+ (Reading)	114-122 (MAC1105C, MGF1106, MGF1107) 123+ (MAC1105)
ACCUPLACER Next Gen	245+	245+	242 - 258 (MAC1105C, MGF1106, MGF1107) 259+ (MAC1105)



DUAL ENROLLMENT vs. EARLY ADMISSIONS

Dual Enrollment	Early Admissions
School counselor advises allowed credits per term (May not be full time)	Must enroll into a minimum of 12 credits (Must be full time)
Can be in any grade in high school	Must be a senior in high school
Not required to enroll in consecutive terms	Must enroll for the Fall and Spring Terms
Take courses at college while still attending high school	Only take BC courses



DID YOU KNOW?



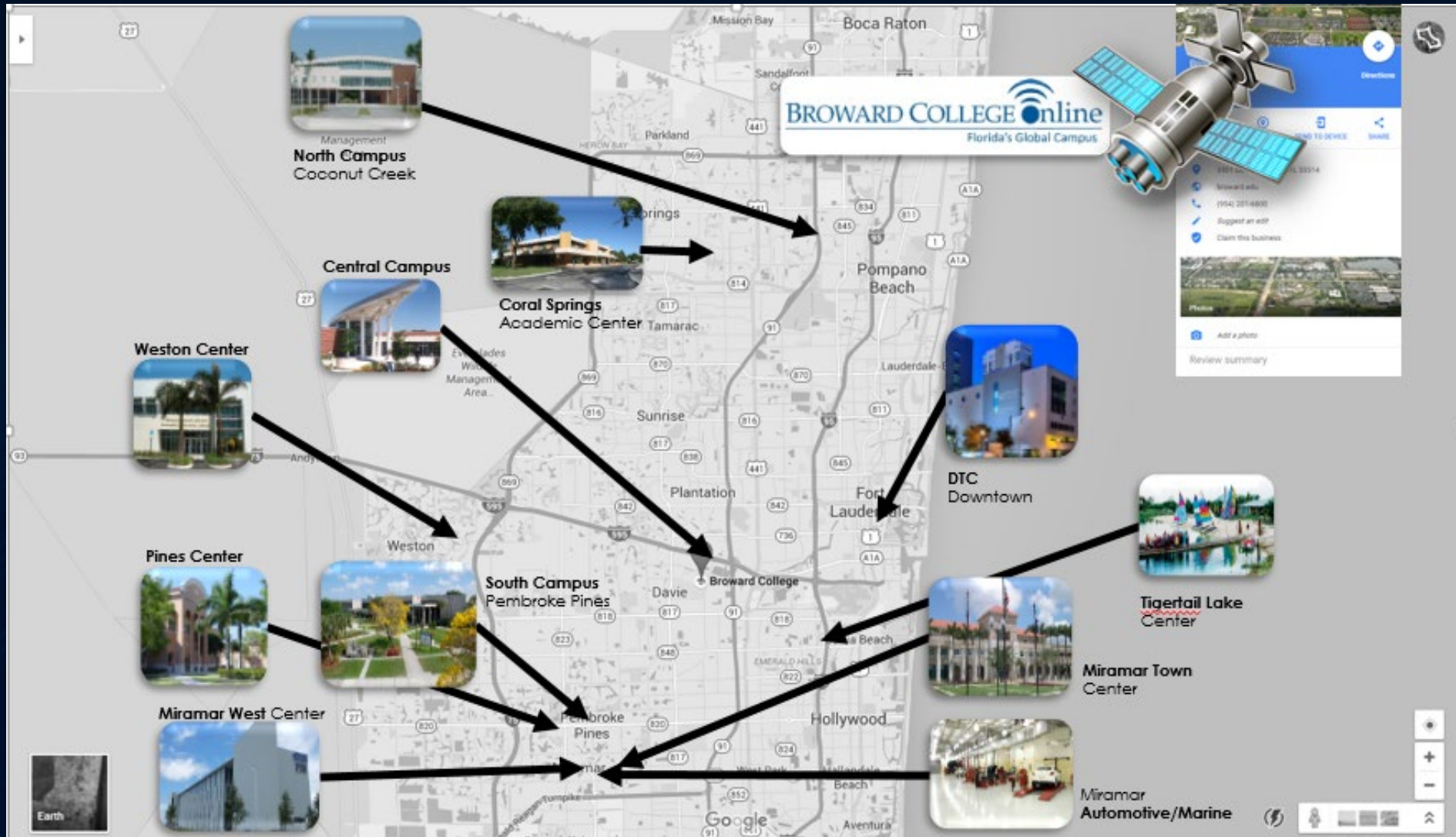
Dual Enrollment Courses

- Will transfer to any Florida public college or university
- Count towards the beginning of your college transcripts
- May not be repeated while still enrolled in the dual enrollment program (includes withdrawals)
- Are FREE!! Application and tuition fees are waived

WHAT CLASSES SHOULD I REGISTER FOR?

- ✓ Review with your counselor what courses you have left to complete for high school graduation.
- ✓ *The most important thing to remember is that graduating from high school is your first priority.*
- ✓ General education courses
- ✓ What do you want your major to be in college?
- ✓ Should not take courses at BC that you are already going to earn credit for from an AP class.

WHERE CAN I TAKE MY CLASSES?



- ✓ You are eligible to take courses at any BC location.
- ✓ There are 4 main campuses and 8 centers.
- ✓ You can also take courses online or remotely.

BROWARDSM
COLLEGE

BC Term and Sessions

- ✓ **Fall and Spring Term**
 - ✓ **Session 1 – 16 weeks**
 - ✓ **Session 2 – First 8 weeks**
 - ✓ **Session 3 – 12 weeks**
 - ✓ **Session 4 – Last 8 weeks**

DROP/WITHDRAWAL PROCESS

Students drop/withdraw online or at a BC by drop or withdrawal date located on student schedule

- ✓ **Drop Date:** About a week after class begins depending on session
 - ✓ Cancels Course Registration
- ✓ **Withdrawal Date:** Occurs 60% into a session
 - ✓ Last date a student can withdraw without grade penalty
- ✓ **Link to Academic Calendar online:**
 - ✓ <http://www.broward.edu/calendar/Pages/term-dates.aspx>

HOW TO GET STARTED

Step 1: Student confirms with school counselor student meets eligibility requirements.

Step 2: Submit a BC Online Application – www.broward.edu

- Write down BC user ID, password, & email.
- Log into your **BC One Access Account** to set up account and security questions.
- ✓ Submit your DE Recommendation Form to your school counselor by the **deadline date** each term.

HOW TO GET STARTED

Do you need to take the common placement exam at BC?

- Visit www.broward.edu/dual.
- Click on **Testing** tile.
- Fill out the Remote Testing Request Form.
- Voucher sent to Personal Email address.
- Follow instructions in email to schedule remote exam.
- Scores available at end of exam.
- Share scores with school counselor.

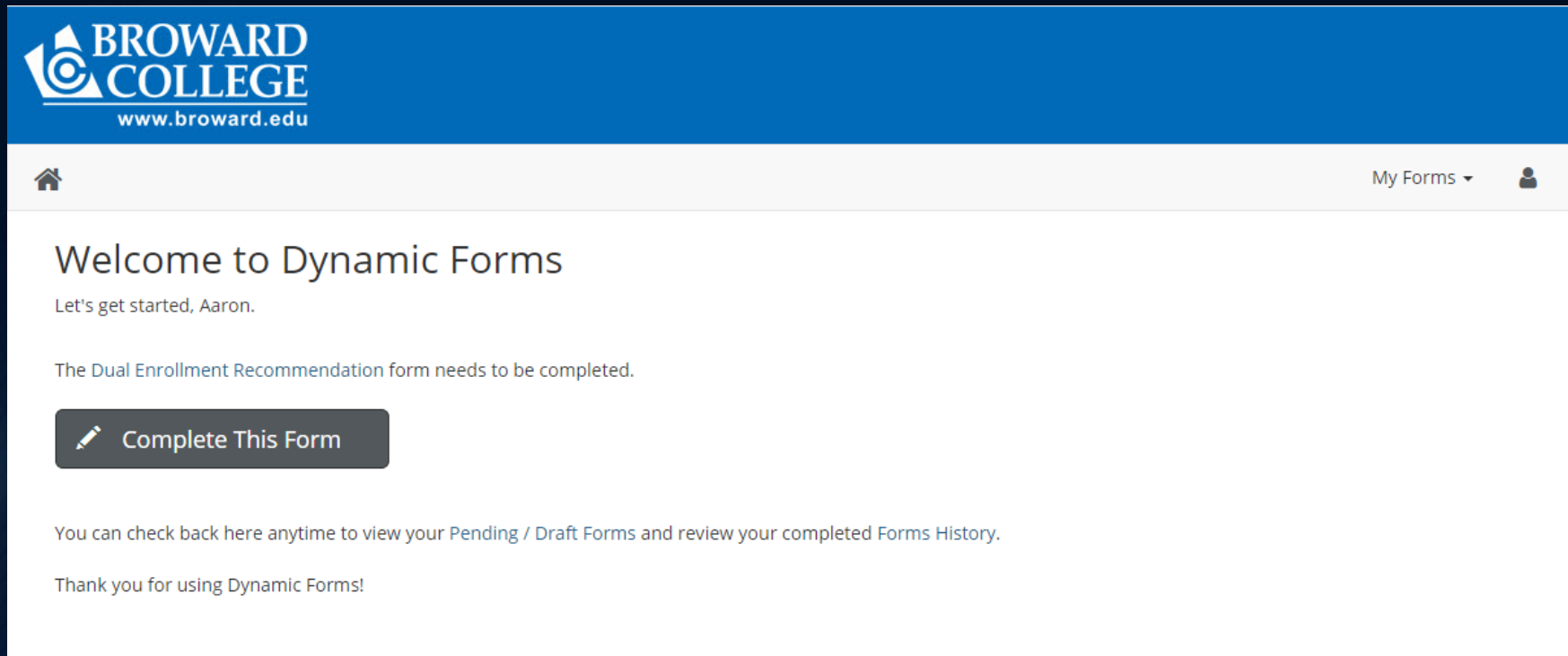
HOW TO GET STARTED

Step 3: Complete Dual Enrollment Recommendation Form online.

- Go to www.broward.edu/dual.
- Click on **Students** tile.
- Look for **How to Get Started** – Choose tab for school type.
- Click on link for Dual Enrollment Recommendation Form.
- Will be prompted to log into BC One Access Account to access form.
- Fill out form and submit. Form routed to Parent.
- Parent Guide online. Parent signs and submits.
- Form routed to School and then BC for approval.

HOW TO GET STARTED

What a student sees after clicking on the link for DE form from website and logging into BC Account.




Student clicks "Complete This Form"

HOW TO GET STARTED

Student confirmation message after form submitted.

**BROWARDSM
COLLEGE**

You have successfully submitted a Dual Enrollment Recommendation Form. For further processing, the parent or legal guardian you specified must provide their signature. The form will be routed to your high school counselor after your parent/guardian has signed. Please ask him/her to review their e-mail for the next step. For more information, please visit our [Dual Enrollment Home Page](#).

 View Form PDF

**BROWARDSM
COLLEGE**

Deadlines! Deadlines! Deadlines!

Deadline Date for Spring Term 2022

October 1, 2021

**Includes completing placement testing &
DE form with parent signature**

**Visit DE website for Deadline Dates for
each term.**



**BROWARDSM
COLLEGE**

HOW AND WHEN DO I REGISTER FOR CLASSES?

- ✓ Log into your BC One Access account beginning the first day of registration.
- ✓ Register for your courses online and provide your schedule back to your counselor.

Registration Date for Spring Term 2022

October 27th, 2021

Classes Begin – January 5, 2022



BROWARDSM
COLLEGE

ACCESSIBILITY RESOURCES

- ✓ If you currently receive accommodations at your high school for a disability **AND** you would like accommodations here at BC, you must contact the Accessibility Resources Office at a BC Campus.
- ✓ You cannot decide at the end of the term that because you are receiving a failing grade that you now want services.
- ✓ **Best to get the services set up so they can be used at any time.**
- ✓ It is **NOT automatic!** You must self-disclose.
- ✓ Information is kept private.
- ✓ www.broward.edu/accessibility



PARKING AND TEXTBOOKS

✓ Parking

- ✓ Open Campus
- ✓ No parking decal required
- ✓ Any issues, contact campus safety at 954-201-4357.



✓ Textbooks

- ✓ Order your books online or go to the bookstore to pick them up.
- ✓ Advise the bookstore staff you are DE and what school you attend.
- ✓ Not required to pay for books, access codes, lab coats and goggles, and select art supplies.

Connect with Broward College

www.broward.edu/dual



Dual Enrollment at
Broward College for
students and parents



Instagram: bc_dualenrollment

**BROWARDSM
COLLEGE**